

Interrupting Racism for Children

 **childadvocates**

YOUTH. EQUITY. JUSTICE.



FOOD AS MEDICINE: THE RACIST ROOTS OF SOCIAL DETERMINANTS OF HEALTH

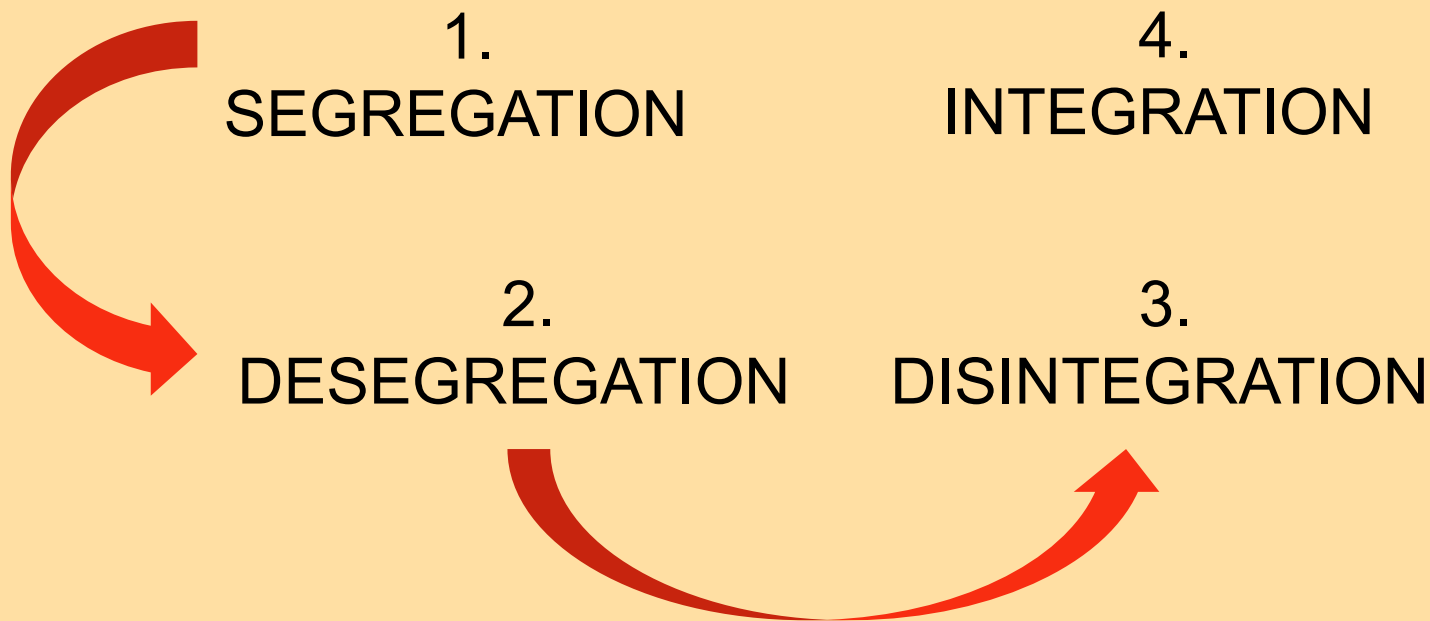
Children's Mental Health

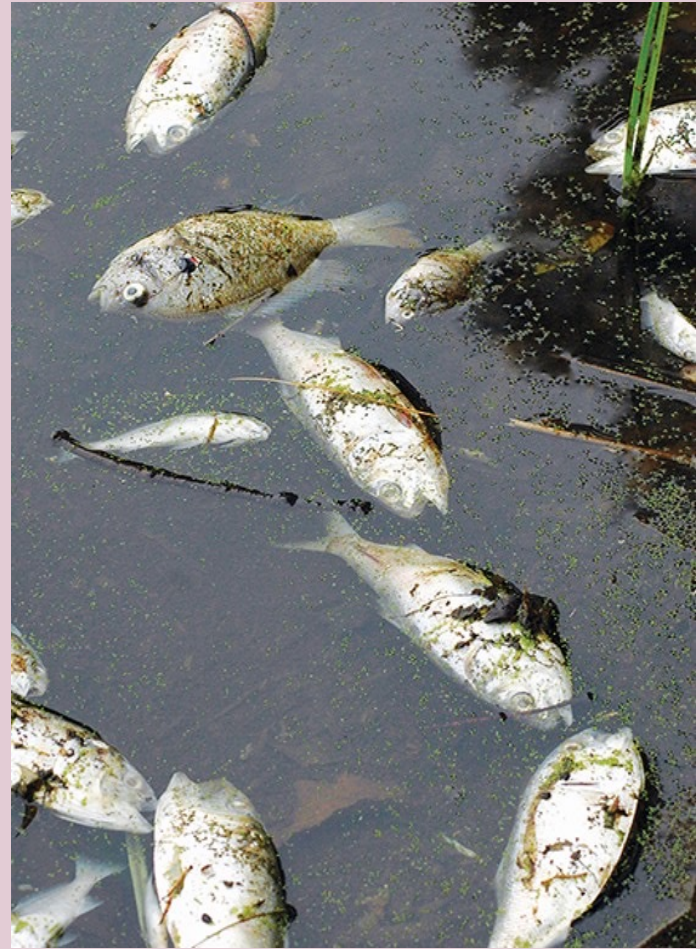
Direct Representation

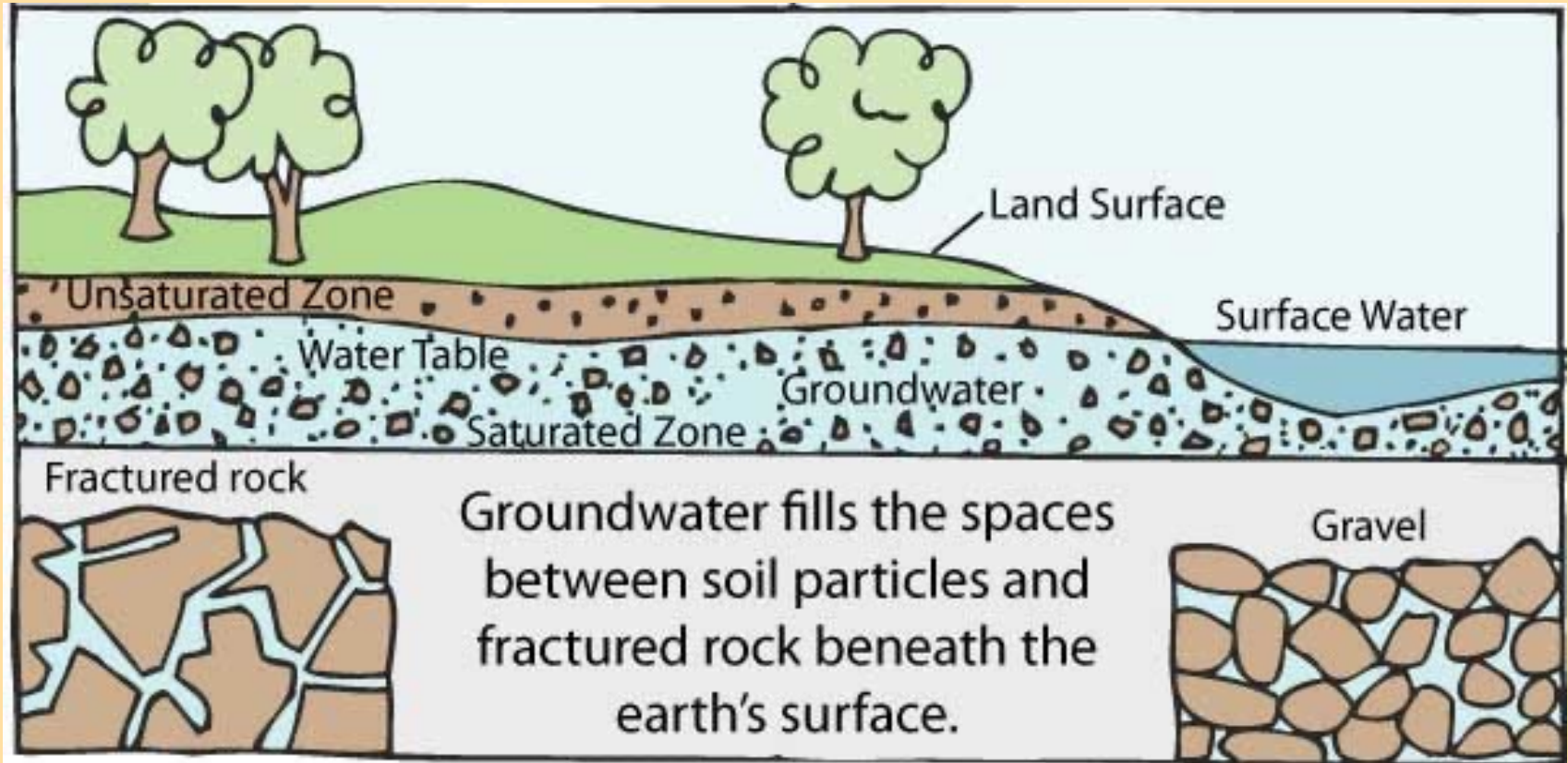
Legal Services

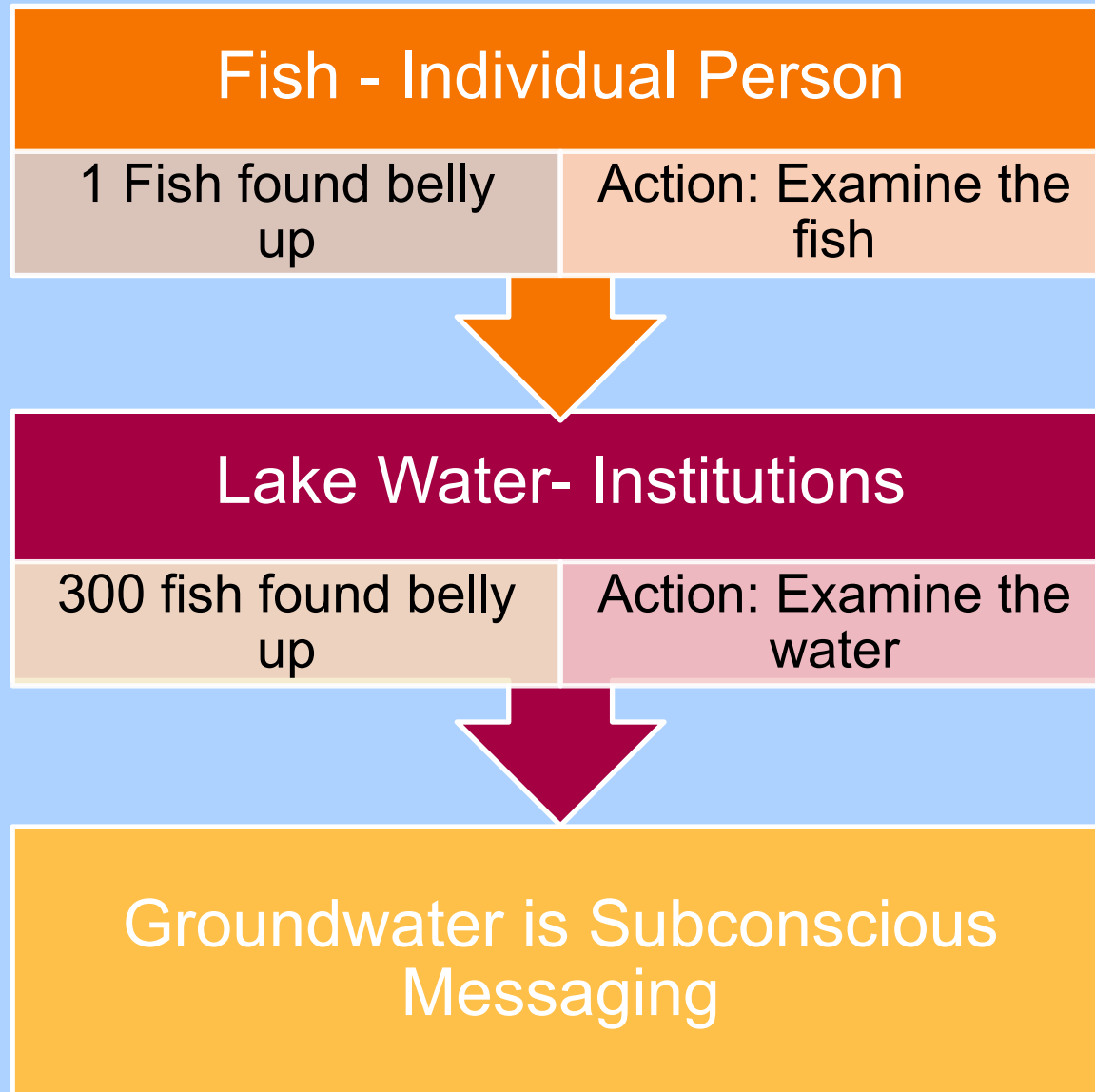
Mediation and Facilitation

Interrupting Racism for Children









How does this play out?

EARLY COVID: MARCH - SEPTEMBER 2020 RATES

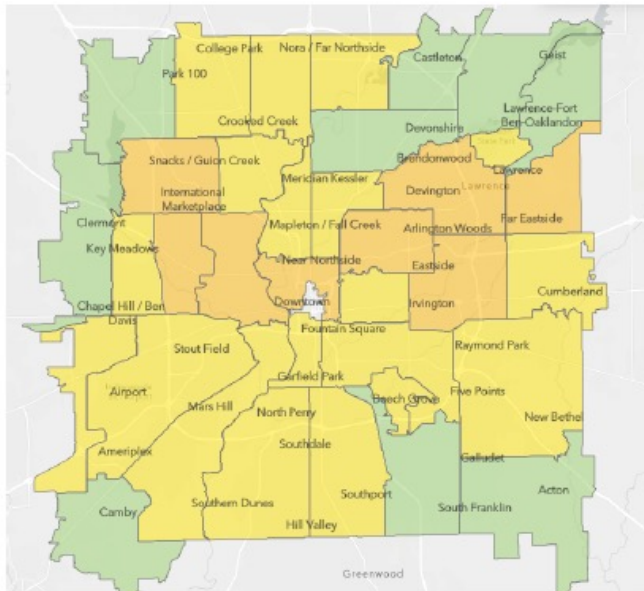
High-Impact ZIP Codes



- 67 percent of residents are people of color.
- 27 percent of residents live under the poverty line
- One in five residents doesn't have a high school diploma
- 15 percent of residents have a disability

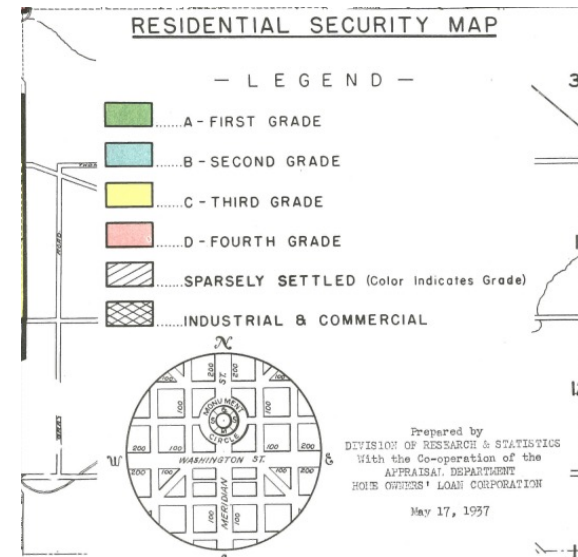
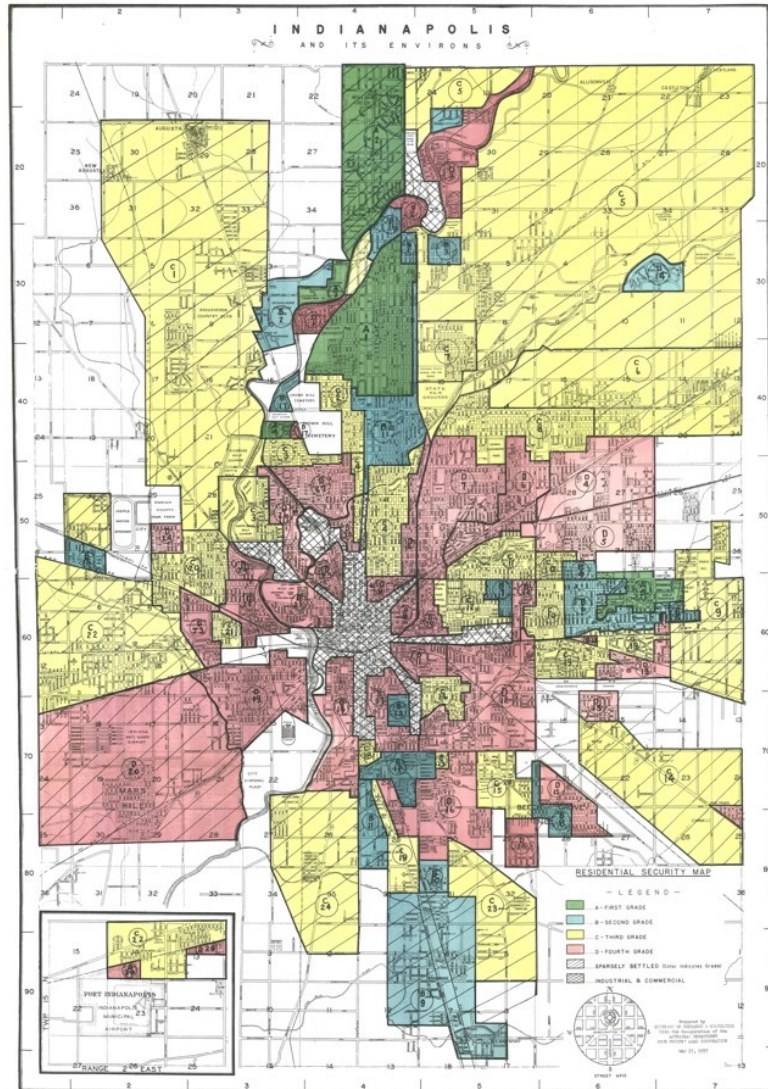
EARLY COVID: MARCH-SEPTEMBER 2020 RATES

Low-Impact ZIP Codes



- 22 percent of residents are people of color.
- 7 percent of residents live under the poverty line
- Only 6 percent residents don't have a high school diploma
- 10 percent of residents have a disability

Indianapolis Red Lining 1937



- Whites more likely to be able to work from home
- Blacks more likely to be frontline workers
- Black neighborhoods are denser
- Whites have higher access to community resources (lower pollution, parks, sidewalks, transportation, healthful food)

YOUR SLICE OF THE PIE





“Racism is a grown-up disease and it is time we stop using kids to spread it.”

– Ruby Bridges